

# 2021 PRODUCT CATALOGUE



**PREMIER  
LOCKERS**

AUSTRALIA'S LOCKER SPECIALIST



## STEELCO 5MM RANGE NEW

The Steelco 5mm Range has been designed for the modern workplace. With a sleeker 5mm carcass, the 5mm range will stand out in any modern office environment.

5mm Range currently in stock, see page 6 for all models.

- ▶ Range of furniture options
- ▶ 5mm slim carcass
- ▶ Laminate timber doors
- ▶ Quality powder coated finish

**Product Range:** Our 5mm Range has a diverse range of furniture options including office pedestals, cabinets, lockers, and filing cabinets.

**Size Modifications:** If our standard sizes do not suit your needs, a customised unit can be designed.

**Minimal Design:** Designed with a sleek 5mm carcass, the 5mm Range is ideal for office environments where space is at a premium.

### ACCESSORIES

The 5mm Range can be fitted with a range of accessories to enhance the usability and offer more features to users. See below for a list of available accessories:

- Planter Box
- Handles and Locks
- Acoustic Back Panels
- Pin Board Back Panels
- Laminex and Polytec Board

### STOCK COLOURS



Custom colours available on request, contact your local sales representative for more information.



## TECHNICAL SPECIFICATION

### Standard Sizes (mm)

#### Modular Range

3 Tier Cabinet - 2 Open Shelf - 1 Door - 1200H x 800W x 450D (Laminate/Steel)

3 Tier Cabinet - 2 Open Shelf - 1 Door - 1200H x 800W x 450D (Steel)

3 Tier Cabinet - 1 Open Shelf - 2 Door - 1200H x 800W x 450D (Laminate/Steel)

3 Tier Cabinet - 1 Open Shelf - 2 Door - 1200H x 800W x 450D (Steel)

2 Tier Cabinet - 1 Open Shelf - 1200H x 800W x 450D (Laminate/Steel)

2 Tier Cabinet - 1 Open Shelf - 1200H x 800W x 450D (Steel)

2 Tier Cabinet - 1 Open Shelf - 1 Door - 800H x 800W x 450D (Laminate/Steel)

2 Tier Cabinet - 1 Open Shelf - 1 Door - 800H x 800W x 450D (Steel)

1 Tier Top Cupboard - 1200H x 800W x 450D (Laminate/Steel)

1 Tier Top Cupboard - 1200H x 800W x 450D (Steel)

1 Tier Ground Cupboard - 800H x 800W x 450D (Laminate/Steel)

1 Tier Ground Cupboard - 800H x 800W x 450D (Steel)

Units can be stacked in different arrangements to suit your preference (ie. 2 Shelf Cabinet with door topped by a 1 shelf open cabinet).





## STEELCO VERTICAL FILING CABINET

Steelco Vertical Filing Cabinets have been created specifically for commercial use and are ideal for high volume storage where floor storage space is restricted.

- ▶ Recessed Handle
- ▶ Heavy-duty double extension ball bearing runners
- ▶ Anti-tilt mechanism installed
- ▶ Drawer fronts include full-length label holder for easy identification
- ▶ Fitted with barrel exchange locks
- ▶ 35kg drawer capacity uniformly distributed load

**AFRDI Certified:** Steelco Vertical filing Cabinets have been Blue Tick AFRDI approved, Reference #13409/2.

**Colours:** Individual units and even individual drawers can be custom painted to different colours.

**Recessed Handle:** The recessed handle provides a large opening for your hand, allowing simple and smooth opening and closing of the drawers.

**NEW VFC Planter Box:** An optional accessory brings life to any space, allowing some natural plant life to seamlessly fit into your workspace.

### TECHNICAL SPECIFICATION

#### Standard Sizes (mm)

- 2 Drawer - 710H x 470W x 620D
- 3 Drawer - 1015H x 470W x 620D
- 4 Drawer - 1320H x 470W x 620D

### LOCKING MECHANISM

- Key Lock (Standard)
- Digital Lock

### STOCK COLOURS

- Silver Grey
- White Satin
- Black Satin
- Beige
- Graphite Ripple



## MERCURY VERTICAL FILING CABINET

Mercury Filing Cabinets have been created specifically for the storage of high volumes of filing. Perfect for any work environment.

- ▶ T-Handle Drawer System
- ▶ Heavy-duty double extension ball bearing runners
- ▶ Anti-tilt mechanism installed Label holder included
- ▶ Fitted with barrel exchange locks
- ▶ 30kg drawer capacity

**AFRDI Certified:** Mercury Vertical Filing Cabinets have been Blue Tick AFRDI approved, Reference #13409/1.

**Colours:** Individual units and even individual drawers can be custom painted to different colours.

**T-Handle:** The T-handle provides a large opening for your hand, allowing simple and smooth opening and closing of the drawers.

**NEW VFC Planter Box:** An optional accessory brings life to any space, allowing some natural plant life to seamlessly fit into your workspace.

### TECHNICAL SPECIFICATION

#### Standard Sizes (mm)

- 2 Drawer - 710H x 470W x 620D
- 3 Drawer - 1015H x 470W x 620D
- 4 Drawer - 1320H x 470W x 620D

### LOCKING MECHANISM

- Key Lock (Standard)
- Digital Lock

### STOCK COLOURS

- Silver Grey
- Black Satin
- White Satin
- Graphite Ripple



## STEELCO LATERAL FILING CABINET

Steelco Lateral Filing Cabinets are durable and designed for storing high volumes of suspension filing. These lockable cabinets feature an anti-tilt safety mechanism and heavy-duty double extension runners.

- ▶ Anti-tilt mechanism installed
- ▶ Full-extension ball bearing runners
- ▶ Adjustable interior leveling feet
- ▶ 60kg UDL drawer capacity
- ▶ Quality powder coated finish
- ▶ 10-year product warranty

**Anti-Tilt Mechanism:** These units are fitted with an anti-tilt mechanism, allowing only one drawer to open at a time for safety purposes. Due to the weight of the product, a counterweight has also been installed for added stability.

**AFRDI Certified:** Steelco Lateral Filing Cabinets have been Blue Tick AFRDI approved, Reference #14533/1.

**Colours:** Individual units and even individual drawers can be custom painted different colours to brighten up any room.

### TECHNICAL SPECIFICATION

#### Standard Sizes (mm)

- 2 Drawer - 710H x 915W x 463D
- 3 Drawer - 1015H x 915W x 463D
- 4 Drawer - 1320H x 915W x 463D
- 4 Drawer + Flipper - 1770H x 915W x 463D

### LOCKING MECHANISM

- Key Lock (Standard)
- Digital Lock

### STOCK COLOURS

- Silver Grey
- White Satin
- Graphite Ripple
- Black Satin (Not available for Flipper)



## STEELCO HEAVY DUTY SCHOOL LOCKER

Heavy Duty School Lockers are designed to withstand impact and robust usage. The carcass is made from double-skinned thick doors, making them an ideal storage unit for schools and colleges. The locker features flush mounted doors with a 180-degree opening capability.

- ▶ Double skinned thick doors
- ▶ Nameplate insert available
- ▶ Ventilation slots in each locker
- ▶ Quality powder coated finish
- ▶ 10-year warranty

**Size Modifications:** Custom-sized lockers can be designed and manufactured to suit specific uses.

**Banking:** The Heavy Duty School Locker is easily joined (or banked) into a bank of two or three, increasing the stability of the locker system.

**Colours:** Individual units and even individual doors can be custom painted to different colours.

### TECHNICAL SPECIFICATION

#### Standard Sizes (mm)

1830H x 385W x 580D

#### Standard Door Configurations

Three Door

### LOCKING MECHANISM

For information about our lock options, and which locking mechanisms fit this locker, please go to page 38.

### STOCK COLOURS (Two tone finish)

■ Light Grey Doors   ■ Dark Grey Carcass



## STEELCO STEEL LOCKER

Steelcos Steel Lockers offer a comprehensive range of robust steel lockers to suit any demanding conditions or environment. Designed and manufactured to the highest standards, the locker units are available in a variety sizes and powder coated finishes.

- ▶ Name plate insert available
- ▶ 180 degree opening capability
- ▶ Flush mounted doors



**Size Modifications:** Lockers can be designed to your size specifications.

**Perforation Patterns:** Unique patterns can be designed to fit in with your branding.

**Acoustic Panels:** Locker doors can be fitted with sound absorbing material to minimise noise in any environment.

**Colours:** Different colours can be applied to individual units or doors.

**Power Options:** Compartments can be fitted with GPO and USB outlets.

**NEW Locker Shelf:** A small shelf inside the locker unit to separate items.

### TECHNICAL SPECIFICATION

#### Standard Sizes (mm)

1830H x 305W x 460D

1830H x 380W x 460D

#### Standard Door Configurations

One Door  
Two Door

Three Door  
Four Door

Six Door  
Eight Door

Combo Door

### LOCKING MECHANISM

For information about our lock options, and which locking mechanisms fit this locker, please go to page 38.

### STOCK COLOURS

Silver Grey

White Satin (Combo Locker Only)





## STEELCO PHONE & KEYS LOCKER

With the growing use of mobile phones in everyday life, we provide an efficient storage option to securely and safely store a small array of items that are essential in this day and age such as mobile phones and keys.

- ▶ Nameplate insert available
- ▶ 180-degree opening capability
- ▶ Flush-mounted doors
- ▶ Quality powder coated finish
- ▶ 10-year warranty

### TECHNICAL SPECIFICATION

#### Standard Sizes (mm)

30 Door - 940H x 900W x 225D  
60 Door - 1810H x 900W x 225D

**Size Modifications:** Custom-sized lockers can be designed and manufactured to suit specific uses.

**Colours:** Individual units and even individual doors can be custom painted different colours.

**Powered Options:** Compartments can be fitted with GPO and USB outlets.

### STOCK COLOUR

(Carcass/Base)

■ Graphite Ripple

(Doors)

□ White Satin



## STEELCO LAPTOP LOCKER

Steelco Laptop Lockers provide a high-density storage option to safely and securely store your tablets and laptops. The laptop lockers are also available in powered options, transforming the lockers into a charging station.

- ▶ Nameplate insert available
- ▶ 180-degree opening capability
- ▶ Flush-mounted doors
- ▶ Quality powder coated finish

### TECHNICAL SPECIFICATION

#### Standard Sizes (mm)

1830H x 380W x 460D

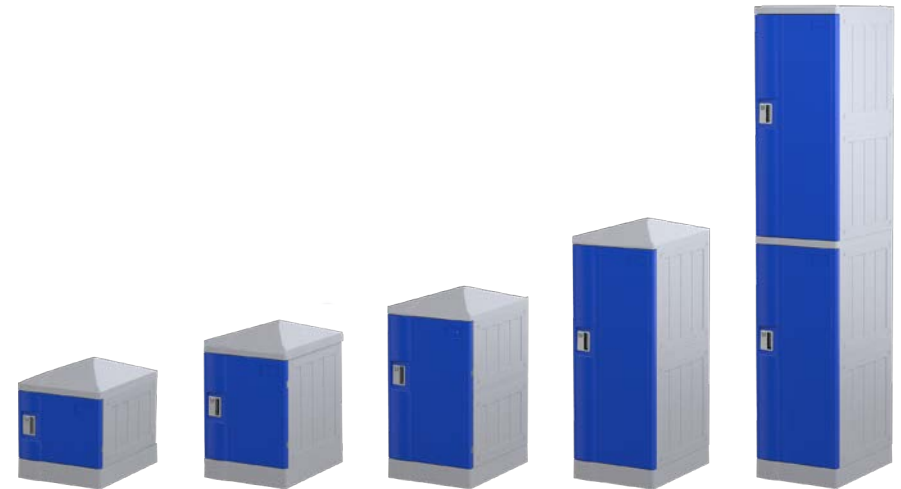
**Size Modifications:** Custom-sized lockers can be designed and manufactured to suit specific uses.

**Colours:** Individual units and even individual doors can be custom painted different colours.

**Powered Options:** Compartments can be fitted with GPO and USB outlets.

### STOCK COLOUR

■ Silver Grey



## STEELCO ABS PLASTIC LOCKER

The ABS (Acrylonitrile Butadiene Styrene) Plastic Locker is a strong, durable and colourful addition to any facility. The flexible design of the lockers allows a large array of customisation to suit your specific needs.

- ▶ Lightweight
- ▶ Adjustable shelves
- ▶ Water-resistant
- ▶ Scratch Resistant
- ▶ Eco-friendly/recyclable
- ▶ 5-year warranty

**Size Modifications:** With the different door sizes available, it is possible to combine the different sizes to build a unit that suits your requirements.

**Sturdy and Strong:** The locker doors have been tested to withstand a 1000kg force.

**Water Resistant:** The ABS lockers are water-resistant, making them the perfect addition to swimming pools and gym areas (amongst others).

### TECHNICAL SPECIFICATION

#### Standard Sizes (mm)

Full Height - 1940H x 380W x 500D  
 Half Height - 1010H x 380W x 500D  
 Third Height - 700H x 380W x 500D

Quarter Height - 545H x 380W x 500D  
 Sixth Height - 390H x 380W x 500D

#### Door Configurations Available

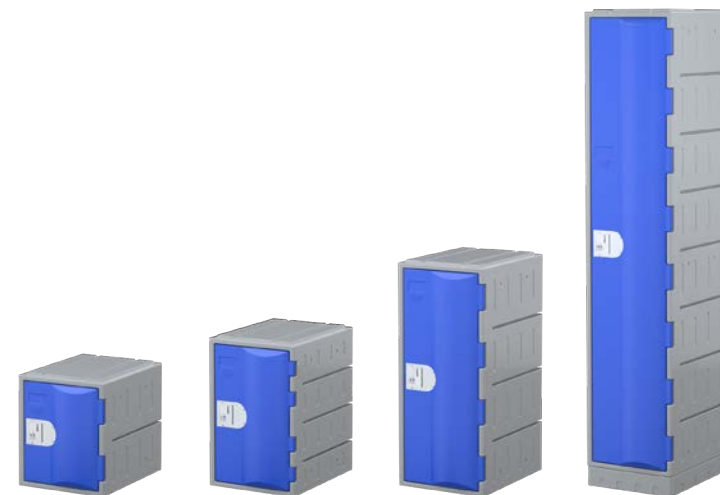
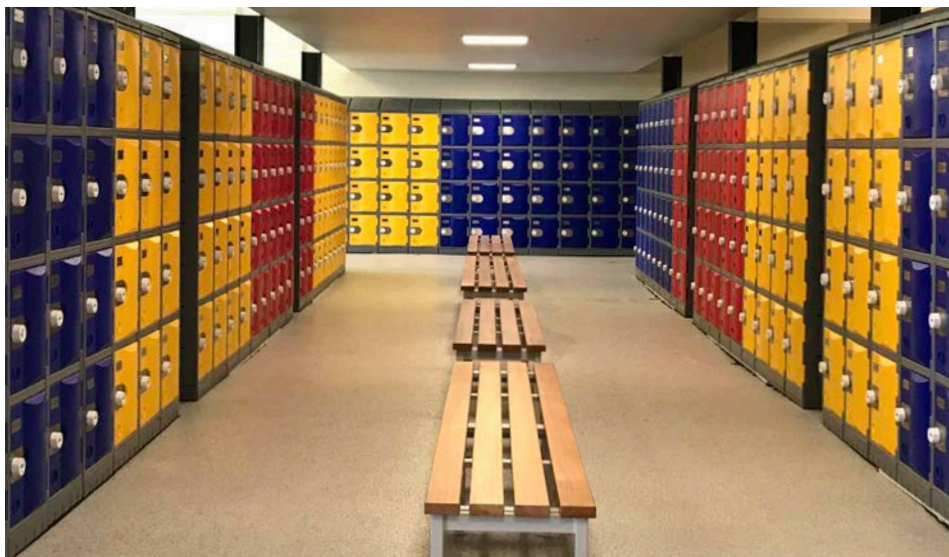
One Door	Three Door	Six Door
Two Door	Four Door	

### LOCKING MECHANISM

For information about our lock options, and which locking mechanisms fit this locker, please go to page 38.

### STOCK COLOUR

Blue
  Yellow
  Red
  Green



## STEELCO HEAVY DUTY PLASTIC LOCKER

Lockers that can outlast their use are hard to find. The Heavy Duty Plastic Lockers defy this idea. Designed to suit extensive use, these lockers are extremely strong making them the ideal addition to any school, fitness centre, or swimming pools (amongst other settings).

- ▶ Adjustable shelves
- ▶ Water-resistant
- ▶ UV proof
- ▶ Vandal-proof
- ▶ Easy to clean
- ▶ Low maintenance
- ▶ Eco-friendly/recyclable
- ▶ 20-year warranty

**Size Modifications:** With the different door sizes available, it is possible to combine the different sizes to build a unit that suits your requirements.

**Water Resistant/ UV Proof:** The Heavy Duty Lockers are water-resistant and UV proof, perfect for indoor and outdoor applications.

### TECHNICAL SPECIFICATION

#### Standard Sizes (mm)

Full Height - 1800H x 385W x 500D  
 Half Height - 900H x 385W x 500D

Third Height - 600H x 385W x 500D  
 Quarter Height - 450H x 385W x 500D

#### Door Configurations Available

One Door	Three Door	Six Door
Two Door	Four Door	Eight Door

### LOCKING MECHANISM

For information about our lock options, and which locking mechanisms fit this locker, please go to page 38.

### STOCK COLOUR

Blue
  Yellow
  Red
  Grey



## STEELCO HD WATERPROOF PLASTIC LOCKER NEW

The ultimate outdoor locker. These Heavy Duty Waterproof Plastic Lockers are designed to suit most conditions, being water, UV and vandal proof. They are the perfect locker solution for any outdoor use in a school, fitness centre, or swimming pools (amongst other settings).

- ▶ Variety of door configurations
- ▶ Waterproof
- ▶ UV proof
- ▶ Vandal-proof
- ▶ Easy to clean
- ▶ Low maintenance
- ▶ Eco-friendly/recyclable
- ▶ 20-year warranty

**Size Modifications:** With the different door sizes available, it is possible to combine the different sizes to build a unit that suits your requirements.

**Waterproof/ UV Proof:** The Heavy Duty Lockers are waterproof and UV proof, making them the ideal solution for outdoor conditions.

\*Lockers are waterproof in standard outdoor conditions. In adverse weather conditions, resulting in flooding or the units being submerged in water, the lockers will leak water. Please discuss this with your local BDM for further advice and recommendations.

### TECHNICAL SPECIFICATION

#### Standard Sizes (mm)

Half Height - 910H x 390W x 500D (990H with 80mm base)  
 Third Height - 610H x 390W x 500D (690H with 80mm base)  
 Quarter Height - 460H x 390W x 500D (540H with 80mm base)

#### LOCKING MECHANISM

For information about our lock options, and which locking mechanisms fit this locker, please go to page 38.

#### COLOURS AVAILABLE (10-12 Week Lead Time)

(Carcass/Base)

■ Marble

(Doors)

■ Navy

■ Red

■ Coffee

■ Yellow

■ Green

■ Grey



## STEELCO CAROUSEL LOCKER NEW

Perfect for any fast-paced, space-conscious area. The Carousel Locker is stable, durable and movable and suitable for both indoor and outdoor use. The locker sizes are all customisable, allowing you to configure the perfect unit for your needs.

- ▶ Stable, durable and movable
- ▶ Water-Resistant
- ▶ Vandal-proof
- ▶ Easy to clean
- ▶ Low maintenance
- ▶ Eco-friendly/recyclable
- ▶ 20-year warranty

**Size Modifications:** With the different door sizes available, it is possible to combine the different sizes to build a unit that suits your requirements.

**Water Resistant:** The Carousel Unit Lockers are water-resistant making it perfect for indoor and outdoor applications.

**Accessories:** A wide range of accessories is available to increase the functionality of the unit.

### TECHNICAL SPECIFICATION

#### Standard Size (mm)

2200H x 1400W x 1400D (With Roof)

#### Door Configurations Available

1 Door      2 Door      3 Door      4 Door      6 Door      8 Door

### LOCKING MECHANISM

For information about our lock options, and which locking mechanisms fit this locker, please go to page 38.

### COLOURS AVAILABLE (10-12 Week Lead Time)

- |   |  |   |
|---|--|---|
| <span style="color: #003366;">■</span> Navy   | <span style="color: #cc0000;">■</span> Red   | <span style="color: #804020;">■</span> Coffee |
| <span style="color: #ffcc00;">■</span> Yellow | <span style="color: #006633;">■</span> Green | <span style="color: #666666;">■</span> Grey   |



## STEELCO LAMINATE LOCKER

Our Laminate Locker Range is designed to be of superior quality and workmanship. With quality lock options and serviceable seating arrangements available, you can brighten up your tired staff areas with classy colours and designs.

Lockers custom designed to suit your premises and design ideas, with all the latest upgrades: media docking stations, LED lighting, mi-fare access locks, ironing boards, with seating to match.

Flush-mounted doors with 180-degree opening capability.

Key lock as standard with additional locking mechanisms available.

Locker Carcass: Available in either 16mm MR Melamine or 16mm PVC Rigid board.

Locker Doors: Available in either 13mm Compact Laminate or 18mm Structural MR MDF.

### TECHNICAL SPECIFICATION

#### Standard Sizes (mm)

1910H x 300W x 500D

1910H x 400W x 500D

#### Door Configurations Available

One Door  
Two Door

Two Door Combo  
Three Door

Four Door

### LOCKING MECHANISM

For information about our lock options, and which locking mechanisms fit this locker, please go to page 38.

### STOCK COLOURS

With various wood finishes and colours available, please contact your local sales representative to find the best fit for you.



## STEELCO FLUSH FRONT LOCKER NEW

Steelco Flush Door Steel Lockers feature a design that includes a flush door closing mechanism. These lockers have been designed to fit into any modern commercial space, with a wide range of customisation options to make the units unique.

- ▶ Variety of door configurations
- ▶ Extra thick steel
- ▶ Anti-Vandal Hinge
- ▶ Flush Design Doors
- ▶ Optional GPO/USB Power
- ▶ Powder Coated Finish
- ▶ Eco-friendly/recyclable
- ▶ 10-year warranty

Flush-mounted doors with 180-degree opening capability.

Key lock as standard with additional locking mechanisms available.

Features an anti-vandal hinge design with a full length steel rod to keep lock secure.

With the different door sizes available, it is possible to combine the different sizes to build a unit that suits your requirements.

### TECHNICAL SPECIFICATION

#### Standard Sizes (mm)

1980H x 400W x 500D

1200H x 400W x 500D

#### Door Configurations Available

One Door  
Two Door

Three Door  
Four Door

Six Door  
Eight Door

### LOCKING MECHANISM

For information about our lock options, and which locking mechanisms fit this locker, please go to page 38. Please reference 'Steel Lockers'.

### STOCK COLOURS

White Satin

Black Satin



## STEELCO MINI LOCKER NEW

The Steelco Mini Locker is ideal for your home or office environment, creating a space efficient storage solution. It has height adjustable shelves and mounting holes for attaching it to the wall. Includes a keylock system so the locker is secure.

- ▶ 2 Internal Adjustable Shelves
- ▶ Key Lock as Standard
- ▶ Louvre Ventilation Slots
- ▶ Wall Mounting Holes
- ▶ Magnetic Closing Mechanism
- ▶ Powder Coated Finish
- ▶ 20kg Shelf Capacity
- ▶ 10-year warranty

Adjustable internal shelves to adjust to your storage requirements.

Key lock as standard with additional locking mechanisms available.

Wall mounting holes pre-cut to make the locker more versatile to your needs.

Individual units and even individual doors can be custom painted different colours.

### TECHNICAL SPECIFICATION

#### Standard Sizes (mm)

1080H x 350W x 460D

720H x 350W x 460D

#### Door Configurations Available

One Door

### LOCKING MECHANISM

For information about our lock options, and which locking mechanisms fit this locker, please go to page 38. Please reference 'Steel Lockers'.

### STOCK COLOURS

- White Satin
- Black Satin





## STEELCO 6 DOOR MAIL LOCKER NEW

Steelco Steel Six Door Lockers are designed to securely store personal items of varying sizes. Designed to fit seamlessly into a workstation setup, the locker units come with combination locks and mail slots as standard.

- ▶ Mail Slot on Each Locker
- ▶ 180-degree opening capability
- ▶ Flush-mounted doors
- ▶ Quality powder coated finish
- ▶ 12mm Slim Edge for a Modern Look
- ▶ Combination Lock as Standard
- ▶ 10-year warranty

Mail Slot featured on each locker door do allow documents to be dropped into each locker as needed.

Combination Lock included on each locker unit as standard.

A wide range of accessories is available to increase the functionality of the unit.

### TECHNICAL SPECIFICATION

#### Standard Sizes (mm)

1200H x 900W x 400D

#### Door Configurations Available

Six Door

### LOCKING MECHANISM

For information about our lock options, and which locking mechanisms fit this locker, please go to page 38. Please reference 'Steel Lockers'.

### STOCK COLOURS

- White Satin       Black Satin



## STEELCO HYBRID SCHOOL LOCKER NEW

The Steelco Hybrid School lockers are a tough working locker for the school environment. Designed with a smooth powder coated steel frame and anti-scratch laminate finish, they are the ideal education locker solution.

- ▶ Durable, Anti-Scratch Finish
- ▶ 180-degree opening capability
- ▶ Flush-mounted doors
- ▶ Quality powder coated finish
- ▶ Pad Latch Hasp as Standard
- ▶ Range of finishes and colours
- ▶ 10-year warranty

A wide range of wood finishes and colours and finishes available.

Pad latch hasp included on each locker unit as standard, perfect for the education environment.

A wide range of locker sizes and door configurations that can be combined to create your ideal locker fitout.

### TECHNICAL SPECIFICATION

#### Door Configurations / Standard Sizes (mm)

- 9 Door (3H x 3W) - 1860H x 1075W x 580D
- 6 Door (2H x 3W) - 1860H x 1075W x 580D
- 6 Door (3H x 2W) - 1860H x 725W x 580D
- 4 Door (2H x 2W) - 1860H x 725W x 580D
- 3 Door (1H x 3W) - 970H x 1075W x 580D

### LOCKING MECHANISM

For information about our lock options, and which locking mechanisms fit this locker, please go to page 38.

### STOCK COLOURS

- White Satin
- Black Satin



## LOCKING MECHANISMS

We provide a range of locking options that satisfy different levels of security required.

For the complete list of which lock category is compatible with each locker, please see the table below.

PRODUCT	KEY	PAD	RFID	DIG	COIN	COM	FIN
Heavy Duty Plastic Lockers	✓	✓	✓	✓	✓	✓	✓
Heavy Duty School Lockers		✓					
Steel Lockers	✓	✓	✓	✓	✓	✓	✓
Phone & Key Lockers	✓	✓	✓	✓	✓	✓	✓
Laptop Lockers	✓	✓	✓	✓	✓	✓	✓
ABS Plastic Lockers	✓	✓	✓	✓	✓	✓	✓
Laminate Locker	✓	✓	✓	✓		✓	✓
Carousel Locker	✓	✓	✓	✓		✓	
Heavy Duty Waterproof Lockers	✓	✓					

### LEGEND

**KEY:** Key Lock

**PAD:** Padlatch

**RFID:** Radio Frequency Identification

**DIG:** Digital Lock

**COIN:** Coin Operated Lock

**COM:** 4 Digit Combination Lock

**FIN:** Finger Print Lock

## COMBINATION LOCKS

### Key Benefits:

- ▶ Keyless convenience
- ▶ User's set the lock's code
- ▶ Master key for emergency openings
- ▶ Probe to retrieve lost codes
- ▶ Up to 10,000 combinations



### Our Recommendations:



CM-1  
ABS Plastic Lockers



CM-17  
HD Plastic Lockers  
Laminate Lockers  
Steel Lockers



CM-9525  
Steel Lockers

To view our full range of Combination Locks please contact your local sales representative

## PUSH BUTTON LOCKS

### Key Benefits:

- ▶ AA Battery compatible models
- ▶ User's set the lock's code
- ▶ Public or private modes
- ▶ LED lock indicator
- ▶ Millions of combinations



### Our Recommendations:



PB-16  
ABS Plastic Lockers



PB-19  
HD Plastic Lockers  
Laminate Lockers  
Steel Lockers



RFPB-10  
HD Plastic Lockers

To view our full range of Push Button Locks please contact your local sales representative

## TOUCH PAD LOCKS

### Key Benefits:

- ▶ AA battery compatible models
- ▶ User's set the lock's code
- ▶ Keyless convenience
- ▶ Public or private mode
- ▶ Millions of combinations



### Our Recommendations:



TP-21  
HD Plastic Lockers



TP-1603  
HD Plastic Lockers  
Laminate Lockers  
Steel Lockers



RFTP-1703  
Laminate Lockers

To view our full range of Touch Pad Locks please contact your local sales representative

## RFID LOCKS

### Key Benefits:

- ▶ AA Battery compatible models
- ▶ User's set the lock's code
- ▶ Public or private modes
- ▶ Keyless convenience
- ▶ Millions of combinations



### Our Recommendations:



RF-780  
Laminate Lockers



RF-5  
HD Plastic Lockers  
ABS Plastic Lockers

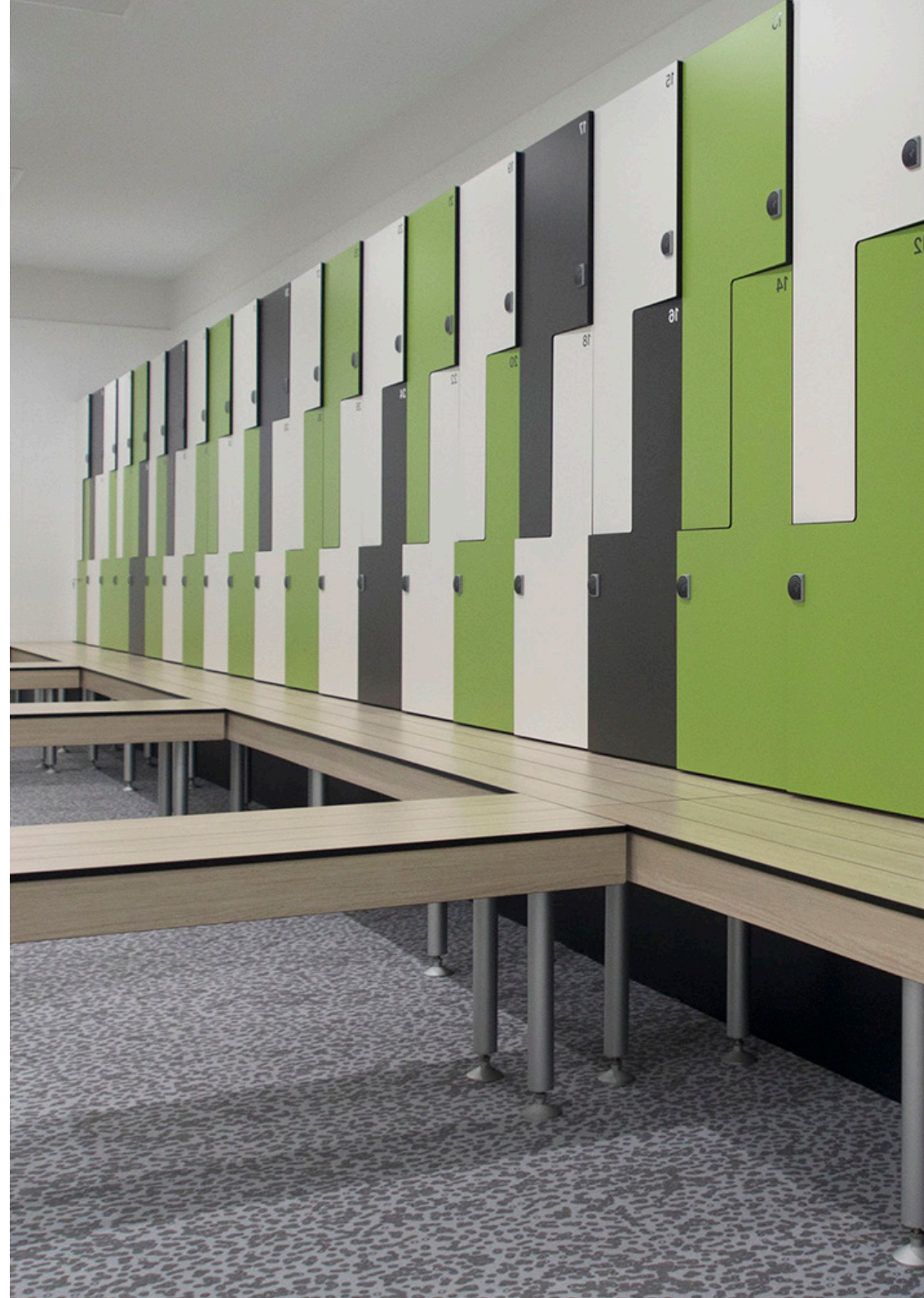


RFPB-10  
Steel Lockers



RFTP-1703  
Laminate Lockers

To view our full range of RFID Locks please contact your local sales representative





## STEELCO PERSONNEL WARDROBE

Steelcos Personnel Wardrobe offers a combination of hanging and shelf storage space. This product is ideal for storing personal items such as clothing, shoes, and helmets.

- ▶ Mirror fitted to the inside of the door
- ▶ Shelves are easily adjustable
- ▶ 180-degree opening capability

### TECHNICAL SPECIFICATION

#### Standard Size (mm)

1830H x 914W x 463D

### STOCK COLOURS

- Silver Grey
- Graphite Ripple

**Ventilation Holes:** Providing fresh air to the unit minimises odours that may arise from housing clothes within the wardrobe.

**Interior Accessories:** Designed to act as an all-purpose wardrobe, the unit is equipped with a mirror and hanging rail for clothes.



## LOCKER SEATING AND STANDS

Specifically designed for the Steelco Locker Range, the Steelco Locker Benches and Stands are the perfect solution to give your locker units more functionality.

### TECHNICAL SPECIFICATION

#### Standard Size (mm)

#### Steel Stand and Benches

Single Locker Bench/Stand - 450H x 305W x 750D  
 Single Locker Bench/Stand - 450H x 380W x 750D  
 Single Locker Stand - 450H x 305W x 460D  
 Single Locker Stand - 450H x 380W x 460D

#### Plastic Seating

ABS Plastic Bench - 450H x 1200W x 400D  
 ABS Plastic Bench - 450H x 1900W x 400D

\* Please note that other locker stands and seating options are available, please contact your local sales representative for more details.



## STEELCO MOBILE PEDESTALS

When it comes to an individual employee's storage, mobile pedestals are the perfect option. These pedestals are a flexible desk storage solution that fits underneath the desk with ease while having a range of configurations that suit the specific requirements for more or less storage space.

- ▶ Anti-tilt mechanism installed
- ▶ Includes pencil tray
- ▶ Lockable castor wheels
- ▶ Quality powder coated finish
- ▶ 10-year warranty

**Size Modifications:** Custom-sized mobile pedestals can be designed and manufactured to suit any specific purposes.

**Opening Capacity:** The mobile pedestal range is fitted with full extension ball bearing runners, allowing full drawer access.

**AFRDI Certified:** The Steelco Classic and Line Ranges of Mobile Pedestals have achieved blue tick certification. Certificate #14103/1 and #13530/3.

Steelco Line Ranges of Mobile Pedestals have been Green Tick AFRDI approved, Reference #13590/2 and #13590/3.

### TECHNICAL SPECIFICATION

#### Standard Sizes (mm)

Classic Range - 2 Box, 1 File Drawer - 630H x 470W x 515D  
 Classic Range - 2 File Drawer - 630H x 470W x 515D  
 Slimline Range - 2 Box, 1 File Drawer - 615H x 300W x 500D  
 Trimline Range - 2 Box, 1 File Drawer - 615H x 390W x 500D

### LOCKING MECHANISM

Key Lock  
 Digital Lock

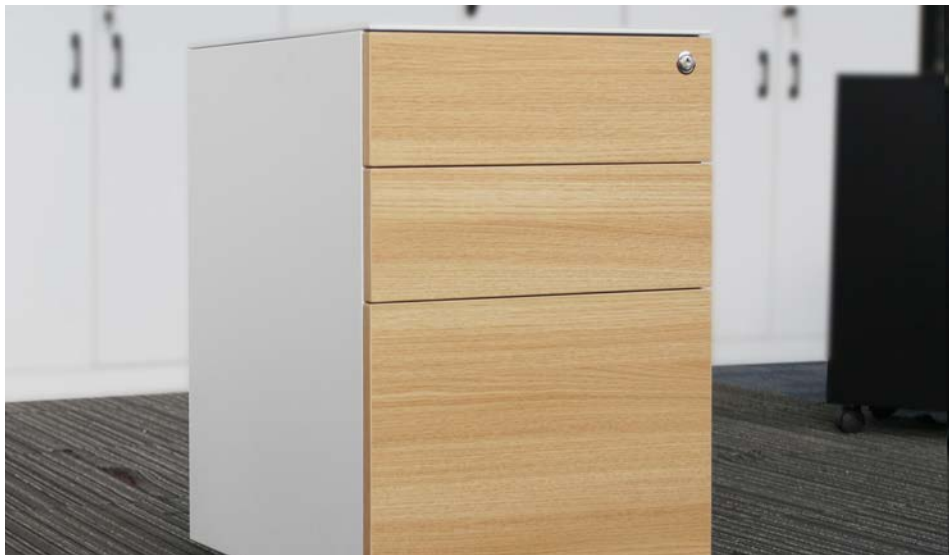
### STOCK COLOURS

(Classic Range)

■ Silver Grey      □ White Satin      ■ Graphite Ripple

(Line Range)

■ Satin Silver      □ White Satin      ■ Black Satin



## STEELCO HYBRID MOBILE PEDESTAL NEW

The Steelco Hybrid Pedestal is a sleek, modern mobile pedestal. Featuring a minimal 5mm steel carcass and wood-finish laminate front drawers, the Steelco Hybrid Pedestal fits seamlessly into any modern workplace while offering functional storage solution.

- ▶ Laminate drawer front
- ▶ Sleek 5mm Steel Carcass
- ▶ Includes pencil tray
- ▶ Lockable castor wheels
- ▶ Quality powder coated finish
- ▶ 10-year warranty

**Sleek, Modern Design:** Sleek, modern styling allows the Steelco Hybrid Pedestal to fit seamlessly into any modern office.

**Custom Colours:** A wide range of wood finishes and colours and finishes available. Contact your local sales representative for more details.

### TECHNICAL SPECIFICATION

#### Standard Sizes (mm)

2 Box, 1 File Drawer - 615H x 390W x 500D

### LOCKING MECHANISM

Key Lock

### STOCK COLOURS

- White Satin       Natural Beech



## STEELCO MOBILE CADDY

The Steelco Trimline Mobile Caddy is ideal for under desk storage or as an extended workspace storage unit. This unit is available with either a tambour side door or as an open shelf side and features two box drawers and one suspension file drawer.

- ▶ Anti-tilt mechanism installed
- ▶ Includes pencil tray
- ▶ Lockable castors to secure the unit
- ▶ Side storage unit available with or without tambour door
- ▶ Fitted with barrel exchange locks
- ▶ 10-year warranty

**Left or Right:** The positioning of the drawer unit can be on the left or right to suit your desired layouts or uses.

**Sturdy and Strong:** The mobile caddy can be fitted with a cushioned seat to be used as a convenient seat in hot-desk applications.

**Colours:** Various coloured door slats, drawers or carcasses can be applied to our mobile caddy to suit the look you are after.

**AFRDI Certified:** The Steelco Trimline Mobile Caddy has been Blue Tick AFRDI approved, Reference #13530/1.

The Steelco Trimline Mobile Caddy has been Green Tick AFRDI approved, Reference #13590/4.

### TECHNICAL SPECIFICATION

#### Standard Sizes (mm)

615H x 1050W x 500D

### LOCKING MECHANISM

Key Lock  
Digital Lock

### STOCK COLOURS

■ Black Satin      □ White Satin





## STEELCO PLAN CABINET

Steelco Plan Cabinets are designed specifically to store and protect plans, drawings, and maps. The drawer size allows for paper up to size A0.

- ▶ Units can be stacked two high
- ▶ Depressor lip within the drawer secures documents
- ▶ 15kg drawer capacity
- ▶ 10 year product warranty

### TECHNICAL SPECIFICATION

#### Standard Sizes (mm)

Standard - 870H x 1375W x 960D

**Size Modifications:** If our standard sizes do not suit your needs, a customised plan cabinet can be designed and manufactured.

**Colours:** Various coloured doors or carcasses can be applied to our Plan Cabinet to suit the look you are after.

Without Stand - 628H x 1375W x 960D

### STOCK COLOURS

■ Graphite Ripple



## STEELCO BOOKCASE

This versatile Steelco Bookcase can be adjusted to suit any storage requirements.

- ▶ Shelves are easily adjustable
- ▶ 40kg shelf capacity
- ▶ Flush side panels for a cleaner finish
- ▶ 10 year warranty

### TECHNICAL SPECIFICATION

#### Standard Sizes (mm)

3 Shelves - 1200H x 900W x 400D  
3 Shelves - 1320H x 900W x 400D

**Size Modifications:** If our standard sizes do not suit your needs, a customised plan cabinet can be designed and manufactured.

**Colours:** Various coloured doors or carcasses can be applied to our Bookcase to suit the look you are after.

4 Shelves - 2000H x 900W x 400D

### STOCK COLOURS

■ Silver Grey

□ White Satin

■ Graphite Ripple



## STEELCO TAMBOUR CABINET

Steelco Tambour Cabinets are ideal for office storage needs. With retractable doors and adjustable shelves, you will be able to easily store a variety of office goods. Ideal for workstations, confined spaces, narrow corridors and an array of office environments.

- ▶ Retractable doors
- ▶ Adjustable interior leveling feet
- ▶ 40kg UDL shelf capacity
- ▶ 10-year product warranty

**Size Modifications:** If our standard sizes do not suit your needs, a customised Tambour Cabinet can be designed and manufactured.

**Colours:** Various coloured door slats or carcasses can be applied to our Tambour Cabinet to suit the look you are after.

**AFRDI Certified:** The Steelco Tambour Cabinet has achieved blue tick certification. Certificate#12230/1.

### TECHNICAL SPECIFICATION

#### Standard Sizes (mm)

2 Shelves - 1015H x 900W x 463D  
 2 Shelves - 1015H x 1200W x 463D  
 3 Shelves - 1200H x 900W x 463D  
 3 Shelves - 1200H x 1200W x 463D

3 Shelves - 1320H x 900W x 463D  
 3 Shelves - 1320H x 1200W x 463D  
 5 Shelves - 2000H x 900W x 463D  
 5 Shelves - 2000H x 1200W x 463D

### LOCKING MECHANISM

Key Lock (Standard)  
 Digital Lock

### STOCK COLOURS

■ Silver Grey    □ White Satin    ■ Black Satin



## STEELCO SLIDING DOOR CABINET

Steelco Sliding Door Cabinets are ideal for narrow spaces as the doors do not interfere with walkways. With the option to transform the doors into a glass presentation cabinet, or have sound reducing acoustic doors fitted, there is something for every occasion.

- ▶ Can be used in a walkway or aisle space without causing interference
- ▶ Adjustable interior leveling feet
- ▶ 40kg UDL shelf capacity
- ▶ 10-year product warranty

**Size Modifications:** If our standard sizes do not suit your needs, a cabinet can be designed and manufactured.

**Colours:** Various coloured doors or carcasses can be applied to our Cabinet Range to suit the look you are after.

**Acoustic or Glass Panels:** The Sliding Door Cabinets can be fitted with an acoustic-rated sound-absorbing material to minimise noise disturbances in the workplace, hidden behind a perforated pattern. Glass paneling can also be fitted to the doors for easy visibility of the contents.

### TECHNICAL SPECIFICATION

#### Standard Sizes (mm)

2 Shelves - 1015H x 914W x 465D  
3 Shelves - 1830H x 914W x 465D

2 Shelves - 1015H x 1500W x 465D  
3 Shelves - 1830H x 1500W x 465D

#### LOCKING MECHANISM

Key Lock (Standard)  
Digital Lock

#### STOCK COLOURS

■ Silver Grey

□ White Satin

■ Graphite Ripple



## STEELCO STATIONERY CABINET

Steelco Stationery Cabinets feature reinforced doors with a three-point locking system, ideal for storing documents and valuable items. Shelves can be adjusted in height to maximise storage capacity. Storage Cabinets are available in various heights, widths, and configurations.

- ▶ 180-degree opening capability
- ▶ Adjustable interior leveling feet
- ▶ 40kg UDL shelf capacity
- ▶ 10-year product warranty

**Size Modifications:** If our standard sizes do not suit your needs, a customised stationery cabinet can be designed and manufactured.

**Colours:** Various coloured doors or carcasses can be applied to our Stationery Cabinet to suit the look you are after.

**Acoustic Panels:** Our Stationery Cabinets can be fitted with an acoustic-rated sound-absorbing material to minimise noises in the workplace.

### TECHNICAL SPECIFICATION

#### Standard Sizes (mm)

- 2 Shelves - 1015H x 914W x 463D
- 3 Shelves - 1830H x 914W x 463D
- 4 Shelves - 2000H x 914W x 463D

#### LOCKING MECHANISM

- Key Lock (Standard)
- Digital Lock

#### STOCK COLOURS

- Silver Grey
- White Satin
- Graphite Ripple



## STEELCO MULTIMEDIA CABINET

Steelco Multimedia Cabinets allow the ability to sort and securely store all your smaller items. Drawer dividers (made to fit CD's and DVD's) are available to provide an organised and structured storage solution.

- ▶ Plastic parts bins can be used for small parts storage
- ▶ Ball-bearing runners
- ▶ Key lock as standard
- ▶ 30kg UDL shelf capacity
- ▶ Quality powder coated finish
- ▶ 10-year product warranty

**Size Modifications:** If our standard sizes do not suit your needs, a customised stationery cabinet can be designed and manufactured.

**Colours:** Various coloured doors or carcasses can be applied to our Multimedia Cabinet to suit the look you are after.

### TECHNICAL SPECIFICATION

#### Standard Sizes (mm)

7 Drawers - 1320H x 790W x 620D  
10 Drawers - 1370H x 710W x 620D

### LOCKING MECHANISM

Key Lock (Standard)  
Digital Lock

### STOCK COLOURS

■ Silver Grey      ■ Graphite Ripple



## STEELCO ANGUS WORKSTATION NEW

Create a modern office partitioning system using the Angus Range of free-standing screen dividers. Partitions, tabletops, and sofas can all be colour customised to meet specific design needs.

- ▶ Modular Design
- ▶ Features open and semi-open workspace options
- ▶ E1-grade environmental particle board
- ▶ Access space for office pedestal

**Modular Design:** The modular workstation design allows for a variety of varying sections, colours and designs to create a custom arrangement to suit your space and needs.

**Desk Screen:** Optional fabric covered desk screens offer some privacy and adds a pop of colour.

**Wire Box:** With a sleek ABS plastic design, the wire box gives users direct access to cable ports to plug-in devices.

**Metal Cable Tray:** Affixed underneath the workstation, the cable tray cleans up any workspace by allowing the organisation of cables under the desk.

### TECHNICAL SPECIFICATION

#### Standard Sizes (mm)

<b>Partition Workstation 1</b>	3692L x 2902W x 1200H
<b>Partition Workstation 2</b>	3692L x 2930W x 1200H
<b>Partition Workstation 3</b>	3692L x 2930W x 1200H
<b>Space Partition 1</b>	2136L x 1259W x 1400H
<b>Space Partition 2</b>	1200L x 420W x 1050H
	1200L x 420W x 1250H

**Single Workstation** 1200L x 600W x 750H Bespoke sizes available on request

#### STANDARD COLOURS AVAILABLE (10-12 Week Lead Time)

Bespoke colours available on request - please contact your local Business Development Manager

(Worktop)

■ Black  White

■ Natural Birch  Natural Oak

(Steel Beam / Steel Legs)

■ Black  White



## STEELCO AQUINO WORKSTATION NEW

The Aquino Workstation Range features an eye-catching design with a stylish 45-degree feet connection that can be configured to seat between 2 and 6 people. With a wide range of size and colour options to create a unique layout suited to your space.

- ▶ Suitable for up to 6 people
- ▶ Uniquely shaped legs
- ▶ More than 25 screen divider colours
- ▶ E1 grade environmental particle board
- ▶ Access space for office pedestal

**Unique Style:** The eye-catching design of the Aquino workstation features solid steel legs with a clean 45-degree connection.

**Desk Screen:** Optional fabric covered desk screens offer some privacy and adds a pop of colour.

**Wire Box:** With a sleek ABS plastic design, the wire box gives users direct access to cable ports to plug-in devices.

**Metal Cable Tray:** Affixed underneath the workstation, the cable tray cleans up any workspace by allowing the organisation of cables under the desk.

### TECHNICAL SPECIFICATION

#### Standard Sizes (mm)

<b>2 Person</b>	750H x 1200W x 1250D / 750H x 1400W x 1450D
<b>4 Person</b>	750H x 2400W x 1250D / 750H x 2800W x 1450D
<b>6 Person</b>	750H x 3600W x 1250D / 750H x 4200W x 1450D
<b>Single</b>	1200L x 600W x 750H <small>Bespoke sizes available on request</small>

#### Workstation

Additional designs and sizes are available\*

#### STANDARD COLOURS AVAILABLE (10-12 Week Lead Time)

Bespoke colours available on request - please contact your local Business Development Manager

#### (Worktop)

Black  White

Natural Birch  Natural Oak

#### (Steel Beam / Steel Legs)

Black  White



## STEELCO CAPIZZI WORKSTATION NEW

With a sleek, modern look, the Capizzi Range features angular solid legs and a two-colour desktop. With over 25 desk screen colours available, the Capizzi Range is a functional and clean addition to any office environment.

- ▶ Suitable for up to 6 people
- ▶ Uniquely shaped angular legs
- ▶ More than 25 screen divider colours
- ▶ E1 grade environmental particle board
- ▶ Access space for office pedestal

**Unique Style:** The eye-catching design of the Capizzi workstation features solid steel legs with a clean angular connection.

**Desk Screen:** Optional fabric covered desk screens offer some privacy and add a pop of colour.

**Wire Box:** With a sleek ABS plastic design, the wire box gives users direct access to cable ports to plug-in devices.

**Metal Cable Tray:** Affixed underneath the workstation, the cable tray cleans up any workspace by allowing the organisation of cables under the desk.

### TECHNICAL SPECIFICATION

#### Standard Sizes (mm)

<b>2 Person</b>	750H x 1200W x 1200D / 750H x 1400W x 1400D
<b>4 Person</b>	750H x 2400W x 1200D / 750H x 2800W x 1400D
<b>6 Person</b>	750H x 3600W x 1200D / 750H x 4200W x 1400D
<b>Single</b>	1200L x 600W x 750H <small>Bespoke sizes available on request</small>

#### Workstation

Additional designs and sizes are available\*

#### STANDARD COLOURS AVAILABLE (10-12 Week Lead Time)

Bespoke colours available on request - please contact your local Business Development Manager

#### (Worktop)

Black  White

Natural Birch  Natural Oak

#### (Steel Beam / Steel Legs)

Black  White





## STEELCO FANO WORKSTATION NEW

The Fano Workstation has a modern style that gives a workplace a clean and contemporary look. With the distinctive squared legs and glass desk screen with customisable colour detailing, the Fano Workstation is a suitable addition to any workplace.

- ▶ Suitable for up to 6 people
- ▶ Uniquely shaped squared legs
- ▶ Glass desk screen
- ▶ E1 grade environmental particle board
- ▶ Access space for office pedestal

**Unique Style:** The distinctive and unique squared legs in combinations with the clean glass desk screen makes the Fano Workstation a boldly unique addition to any workplace.

**Desk Screen:** Optional fabric covered desk screens offer some privacy and adds a pop of colour.

**Wire Box:** With a sleek ABS plastic design, the wire box gives users direct access to cable ports to plug-in devices.

**Metal Cable Tray:** Affixed underneath the workstation, the cable tray cleans up any workspace by allowing the organisation of cables under the desk.

### TECHNICAL SPECIFICATION

#### Standard Sizes (mm)

<b>2 Person</b>	750H x 1200W x 1200D / 750H x 1400W x 1400D
<b>4 Person</b>	750H x 2400W x 1200D / 750H x 2800W x 1400D
<b>6 Person</b>	750H x 3600W x 1200D / 750H x 4200W x 1400D
<b>Single</b>	1200L x 600W x 750H <small>Bespoke sizes available on request</small>

#### Workstation

Additional designs and sizes are available\*

#### STANDARD COLOURS AVAILABLE (10-12 Week Lead Time)

Bespoke colours available on request - please contact your local Business Development Manager

#### (Worktop)

Black  White

Natural Birch  Natural Oak

#### (Steel Beam / Steel Legs)

Black  White



## STEELCO NORBA WORKSTATION NEW

The Norba Range is a highly versatile modern workstation. With a clean aesthetic featuring angular legs and a wide range of layout and storage options available, the Norba Workstation has an option to fulfill your needs.

- ▶ Suitable for up to 6 people
- ▶ Uniquely shaped angular legs
- ▶ More than 25 screen divider colours
- ▶ E1 grade environmental particle board
- ▶ Access space for office pedestal

**Unique Style:** The distinctive and unique angular legs and coloured desk screen makes the Norba Workstation a customisable and unique addition to any workplace.

**Desk Screen:** Optional fabric covered desk screens offer some privacy and adds a pop of colour.

**Wire Box:** With a sleek ABS plastic design, the wire box gives users direct access to cable ports to plug-in devices.

**Metal Cable Tray:** Affixed underneath the workstation, the cable tray cleans up any workspace by allowing the organisation of cables under the desk.

### TECHNICAL SPECIFICATION

#### Standard Sizes (mm)

<b>2 Person</b>	750H x 1200W x 1200D / 750H x 1400W x 1400D
<b>4 Person</b>	750H x 2400W x 1200D / 750H x 2800W x 1400D
<b>6 Person</b>	750H x 3600W x 1200D / 750H x 4200W x 1400D
<b>Single</b>	1200L x 600W x 750H <small>Bespoke sizes available on request</small>

#### Workstation

Additional designs and sizes are available\*

#### STANDARD COLOURS AVAILABLE (10-12 Week Lead Time)

Bespoke colours available on request - please contact your local Business Development Manager

#### (Worktop)

Black  White

Natural Birch  Natural Oak

#### (Steel Beam / Steel Legs)

Black  White



## STEELCO PADRIA WORKSTATION NEW

With a clean and minimal design, the Padria Range is an on-trend collection suitable for any workspace. Available in a variety of configurations, styles and colour combinations so you can find the perfect fit for your office.

- ▶ Suitable for up to 6 people
- ▶ Perfect for team collaboration
- ▶ More than 25 screen divider colours
- ▶ E1 grade environmental particle board
- ▶ Access space for office pedestal

**Desk Screen:** Optional fabric covered desk screens offer some privacy and adds a pop of colour.

**Wire Box:** With a sleek ABS plastic design, the wire box gives users direct access to cable ports to plug-in devices.

**Metal Cable Tray:** Affixed underneath the workstation, the cable tray cleans up any workspace by allowing the organisation of cables under the desk.

### TECHNICAL SPECIFICATION

#### Standard Sizes (mm)

<b>2 Person</b>	750H x 1200W x 1200D / 750H x 1400W x 1400D
<b>4 Person</b>	750H x 2400W x 1200D / 750H x 2800W x 1400D
<b>6 Person</b>	750H x 3600W x 1200D / 750H x 4200W x 1400D
<b>Single</b>	1200L x 600W x 750H <small>Bespoke sizes available on request</small>

#### Workstation

Additional designs and sizes are available\*

#### STANDARD COLOURS AVAILABLE (10-12 Week Lead Time)

Bespoke colours available on request - please contact your local Business Development Manager

(Worktop)

Black  White

Natural Birch  Natural Oak

(Steel Beam / Steel Legs)

Black  White



## STEELCO CHAIRS

Work for longer in comfort with the right office chair. Perfect for a wide variety of situations, with the option for colour customisation, our chair range is ideal for the commercial, educational and healthcare environments.

- ▶ Lightweight Design
- ▶ Linking tips fitted to sled base
- ▶ 110kg BIFMA Accreditation
- ▶ Easily stacked and moved
- ▶ 5-year warranty

**Comfortable Padding:** Optional fabric cushions can be added to the chairs to provide additional comfort.

**Sturdy and Strong:** The chairs have all been independently accredited by BIFMA to safely support 110kg.

**Colours:** Various coloured fabrics and plastics can be applied to our chair range to suit the look you are after.

**AFRDI Certified:** Steelco Adam Chairs have been Blue Tick AFRDI approved, Reference # 14809/1.

Steelco Ace Chairs have been Blue Tick AFRDI approved, Reference# 13073/1.

### TECHNICAL SPECIFICATION

**Standard Sizes (mm)**  
830H x 540W x 570D

### CHAIR DESIGNS

Ace Chair  
Adam Chair  
Curve Chair

### STOCK COLOURS

■ Black





## STEELCO PADOVA CHAIR RANGE NEW

The Steelco Padova Executive Chair range is a sleek, modern design seating solution, suitable for any office environment. It is also an ideal option for a Home Office set up, offering all day comfort.

- ▶ Mesh Back Support
- ▶ Fabric Finish Foam Seat
- ▶ Aluminum Base
- ▶ Soft PU Arms
- ▶ 100kg Weight Capacity
- ▶ Nylon Frame
- ▶ 5-Year Warranty

**Comfortable Mesh Back:** Soft mesh back support offers all day comfort.

**Sturdy and Strong:** The chairs have all been independently accredited by BIFMA to safely support 110kg.

**Colours:** With a range of different Padova Chairs available, it is possible to select the perfect model for your requirements. Chairs can also be customised, with a range of optional colours available.

### TECHNICAL SPECIFICATION

#### Standard Sizes (mm)

Executive Chair - 93-103H x 68.5W x 57D

Visitor Chair - 96.5H x 68.5W x 57D

### CHAIR DESIGNS

Padova Executive Chair - No Arms  
Padova Executive Chair  
Padova Visitor Chair

### STOCK COLOURS

■ Black



## STEELCO ANGUS PUBLIC SOFA NEW

The Steelco Angus Public Sofa is a contemporary public sofa, built from business grade materials and is designed to compliment any business or private space that requires seating.

- ▶ Single and Double Sided Models
- ▶ Business Grade Design
- ▶ Built in Table
- ▶ High Density Foam for Heavy Use
- ▶ Reinforced Fabric
- ▶ 5-Year Warranty

### Modern Styled Seating Solution:

Designed to fit seamlessly into any modern business space that requires seating.

**Sturdy and Strong:** Built with high-density foam offering long lasting comfort for heavy-use spaces and reinforced fabric to protect from tears.

**Colours:** The Angus Public Soda can also be customised, with a range of optional colours available.

### TECHNICAL SPECIFICATION

#### Standard Sizes (mm)

Single Sofa - 720H x 690W x 2100D

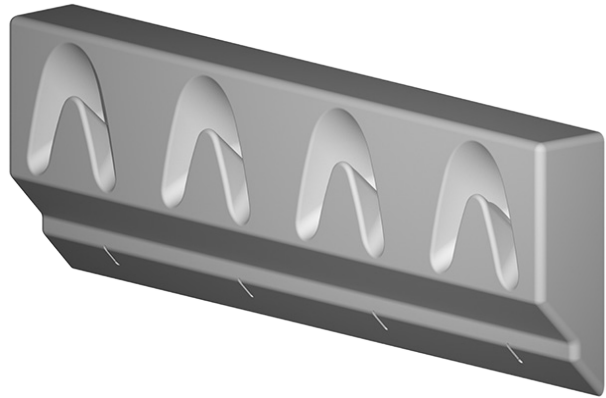
Twin Sofa - 720H x 1380W x 2960D

### CHAIR DESIGNS

Single Sided Public Sofa  
Double Sided 'Twin' Public Sofa

### COLOURS AVAILABLE

Please contact your local sales representative for more information.



## SNUGHOOKS

Snughooks represent the latest and safest hook on the market. Snughooks are smooth-faced, recessed hooks; eliminating the dangers associated with protruding wall hooks. Snughooks are ideal for educational institutes and public areas and can be used to store items such as school bags, minimising potential trip hazards.

- ▶ No protruding hook
- ▶ No sharp edges
- ▶ Australian owned, designed and made
- ▶ Flame retardant
- ▶ UV stabilised
- ▶ Wall fixing kit included
- ▶ 10-year product warranty

**Safe:** With no protruding hooks or sharp edges the Snughook is one of the safest hook systems on the market.

**Strong:** Snughooks have been built to last. Flame retardant, UV stabilised and rated to support a combined load of 120kg.

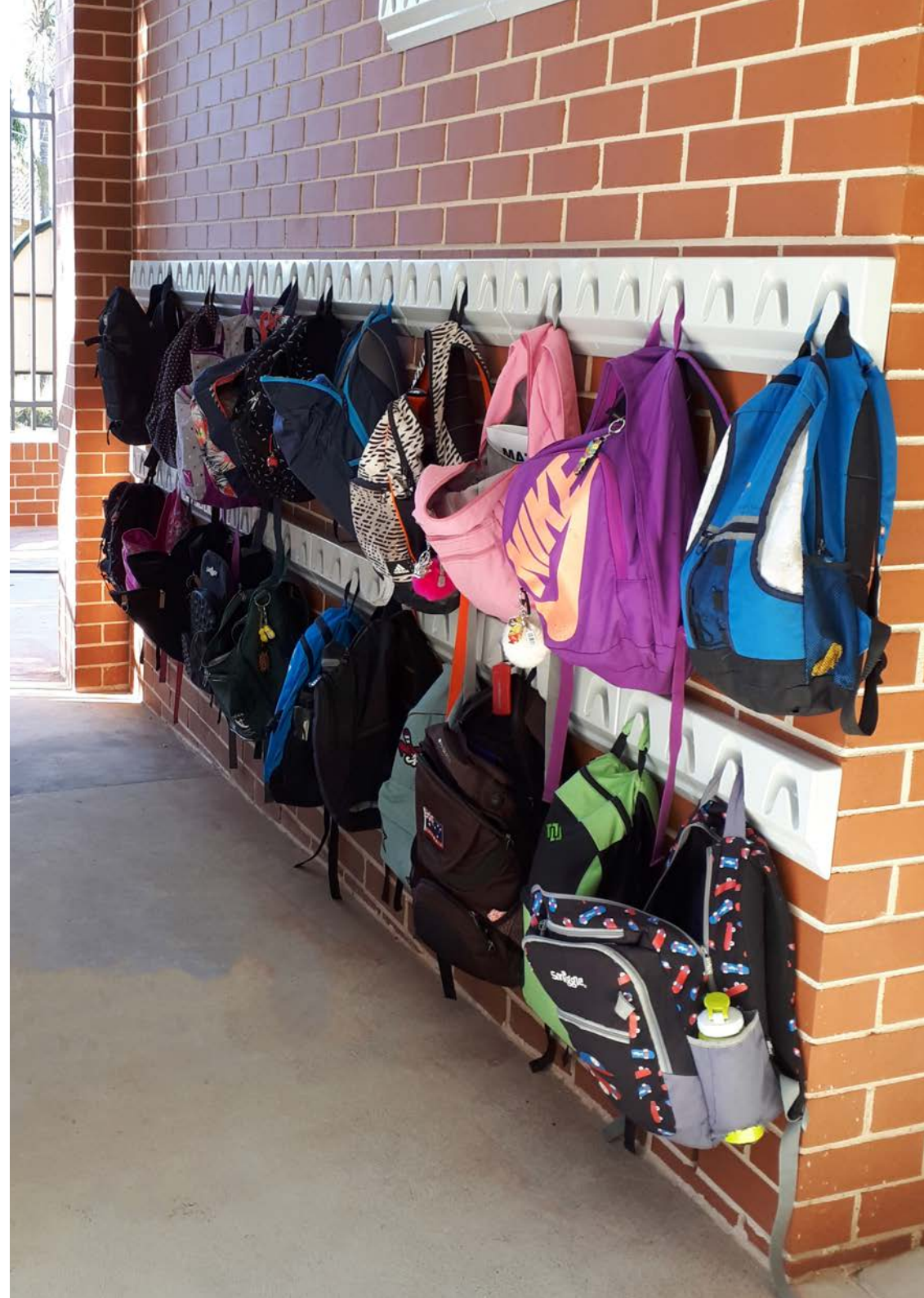
### TECHNICAL SPECIFICATION

#### Standard Sizes (mm)

167H x 480W x 45D

### STOCK COLOURS

- White
- Black
- Grey





## STEELCO WIRE SHELVING

This lightweight shelving system is ideal for storing archive boxes or products that require easy access.

- ▶ 150kg shelf capacity
- ▶ 5 Shelves included with each unit
- ▶ Adjustable feet for uneven floors
- ▶ Quick and easy to assemble due to its bolt-less design

**Size Modifications:** If our standard sizes do not suit your needs, customised wire shelving can be designed and manufactured.

**Bolt-less design:** This unit can be put together and modified extremely fast as it has a bolt-less design.

### TECHNICAL SPECIFICATION

#### Standard Sizes (mm)

1800H x 900W x 450D - 5 Shelves  
1800H x 1200W x 450D - 5 Shelves

1800H x 1500W x 450D - 5 Shelves

### STOCK COLOURS

■ Chrome    □ White Satin    ■ Black Satin



## UNI-SHELF®

Uni-Shelving® is a versatile storage system that can be easily added to or reconfigured, ideal for the growing business. This modular system can be made mobile with the addition of Aislesaver runners and bases. Uni-Shelving® bays are available in various height and width configurations.

- ▶ Modular Design
- ▶ Shelf height adjustable
- ▶ Australian Made
- ▶ 100kg Shelf Capacity (UDL)
- ▶ Easy to add on extra bays

### TECHNICAL SPECIFICATION

#### Standard Sizes (mm)

2175H x 900W x 400D  
2175H x 1200W x 400D

### STOCK COLOURS

■ Cyber Grey    □ White Satin





## AISLESAVER®

The Aislesaver (Mobile Shelving System) is a uniquely designed system that can be customised to suit any high-density storage requirement. The system is fitted with a discreet anti-tilt system for operator safety. Units are available in single or tandem bay widths.

- ▶ Key or Digital locking option
- ▶ Option for manual (push-pull) or mechanical (drive) system
- ▶ 75kg shelf capacity (UDL)
- ▶ Adjustable shelves (25mm)

**Size Modifications:** If our standard sizes do not suit your needs, a customised shelving unit can be designed and manufactured.

**Australian Made:** Manufactured in Perth using Australian Bluescope steel, we can provide high-quality shelving, with a quick turn around.

**Acoustic Panels:** Our Aislesaver® can be fitted with an acoustic-rated sound-absorbing material to minimise noises in the office.

### TECHNICAL SPECIFICATION

#### Standard Sizes (mm)

Height	1875	2175	2375	
Width	750	900	1000	1200
Depth	300	400	450	600

#### SYSTEM TYPE

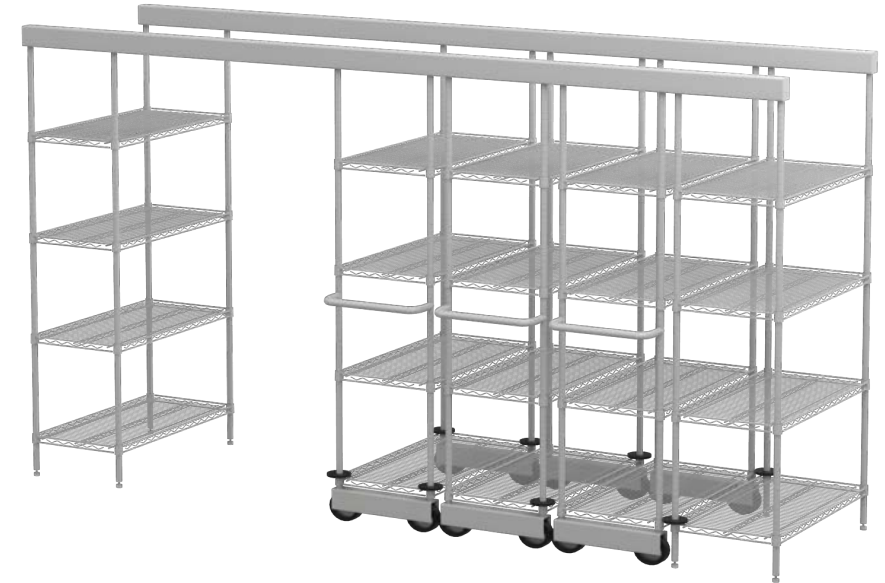
Mechanical - Ezi Drive      Manual - Ezi Slide      Electronic - TouchDrive

#### COMPLIANCE

Our Aislesaver® has been tested and designed in accordance with the relevant Australian standards and practices for steel shelving from The Australian Steel Institute, Standards Australia, SEMA and European Federation of Materials Handling Associations. For further information about which standards applies, contact your local sales representative.

#### STOCK COLOURS

■ Cyber Grey      □ White Satin



## TOP TRACK® NEW

The Top-Track® mobile wire shelving system utilises an overhead track, making it ideal for areas where it is difficult to incorporate a floor operated mobile shelving system. This lightweight wire shelving system is ideal if airflow and durability are important for your storage needs.

- ▶ Overhead track system
- ▶ Minimises hazards
- ▶ Easy to add more bays
- ▶ Simple to operate
- ▶ Shelving height adjustable

**Size Modifications:** Custom-sized wire shelving can be designed and manufactured to suit any specific uses.

**Strength:** Using the collar sleeve mechanism to deliver high weight capacities (150kg per shelf (static) and 60kg per shelf (mobile)).

**Colour Customisation:** Individual units and even individual shelf levels can be different colours if required.

**Accessories:** We offer a wide range of accessories to enhance the functionality of the Top-Track® system.

### TECHNICAL SPECIFICATION

#### Standard Sizes (mm)

Height	2170			
Width	900	1200	1500	1800
Depth	450	600		

#### PRODUCT FINISH

Stainless Steel  
 Chrome Plated  
 Powdercoated Finish  
 Aint-Microbial Finish

# RECENT PROJECTS



**HEAVY DUTY PLASTIC LOCKERS**  
Point Cook College



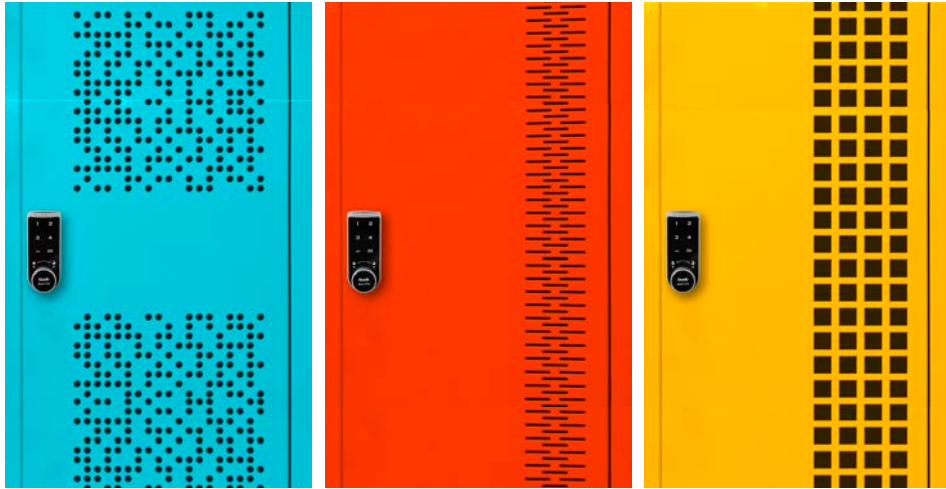
**CUSTOM LAB CABINETS**  
The University of Sydney



**EZI-DRIVE AISLESAVER®**  
Powerhouse Museum



**OFFICE FITOUT**  
DHS, Perth Office



## PRODUCT CUSTOMISATION

We know that sometimes standard products are not enough. To best serve our client's particular requirements, whilst providing furniture that can make every environment unique we encourage a customised approach to our product range. Just some of the modifications we provide are:

**Size Modifications:** Custom-sized products can be designed and manufactured to suit specific uses.

**Perforation Patterns:** Unique patterns can be designed to set your office apart from the rest.

**Special Requirements:** We can design customised products, to suit specific requirements, ensuring you get a product best suited to your needs.

**Colours:** Adding the correct colour to your environment is important in establishing the right look and feel to your workspace. Ask your local sales representative about our additional custom colour options.



## AFTER SALES SERVICE

Customer satisfaction is an imperative component of the comprehensive service that we provide. We strive to meet objectives and deliver products and services to meet our customer's needs.

### CONTACT US

Have some questions for our team? Contact us using your preferred method from the details below.

Phone: 1300 202 557

Email: [sales@premier-lockers.com](mailto:sales@premier-lockers.com)

### (Visits By Appointment Only)

6 Foundry Road, Seven Hills, NSW, 2147  
 85 Proximity Drive, Sunshine West, VIC, 3020  
 58 Mica Street, Carole Park, QLD, 4300  
 4 Hanwell Way, Bassendean, WA, 6054  
 27 Beafield Road, Para Hills West, SA, 5096

We also endeavour to provide a better product and ongoing service, to do this we follow our ISO 9001:2008 certified quality management system.





**PREMIER  
LOCKERS**

---

AUSTRALIA'S LOCKER SPECIALIST

**1300 202 557**  
**SALES@PREMIER-LOCKERS.COM**  
**PREMIER-LOCKERS.COM**